

CERTIFIED LAND CORNER RECORDATION

Milepost 13

DESCRIPTION OF CORNER EVIDENCE FOUND, AND ORIGINAL RECORD (If known)

Wyoming - Nebraska
 T. 14 N.
 R. 60 W. | R. 59 W

Found pink granite monument, 1' x 1' x 3' high. Marked "13M" on south, "WYO" on west, and "NEB" on east.

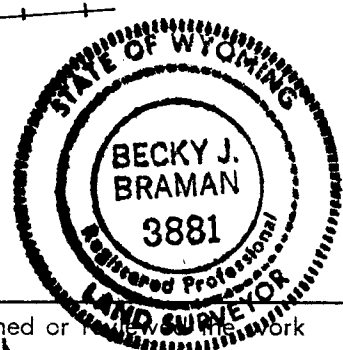
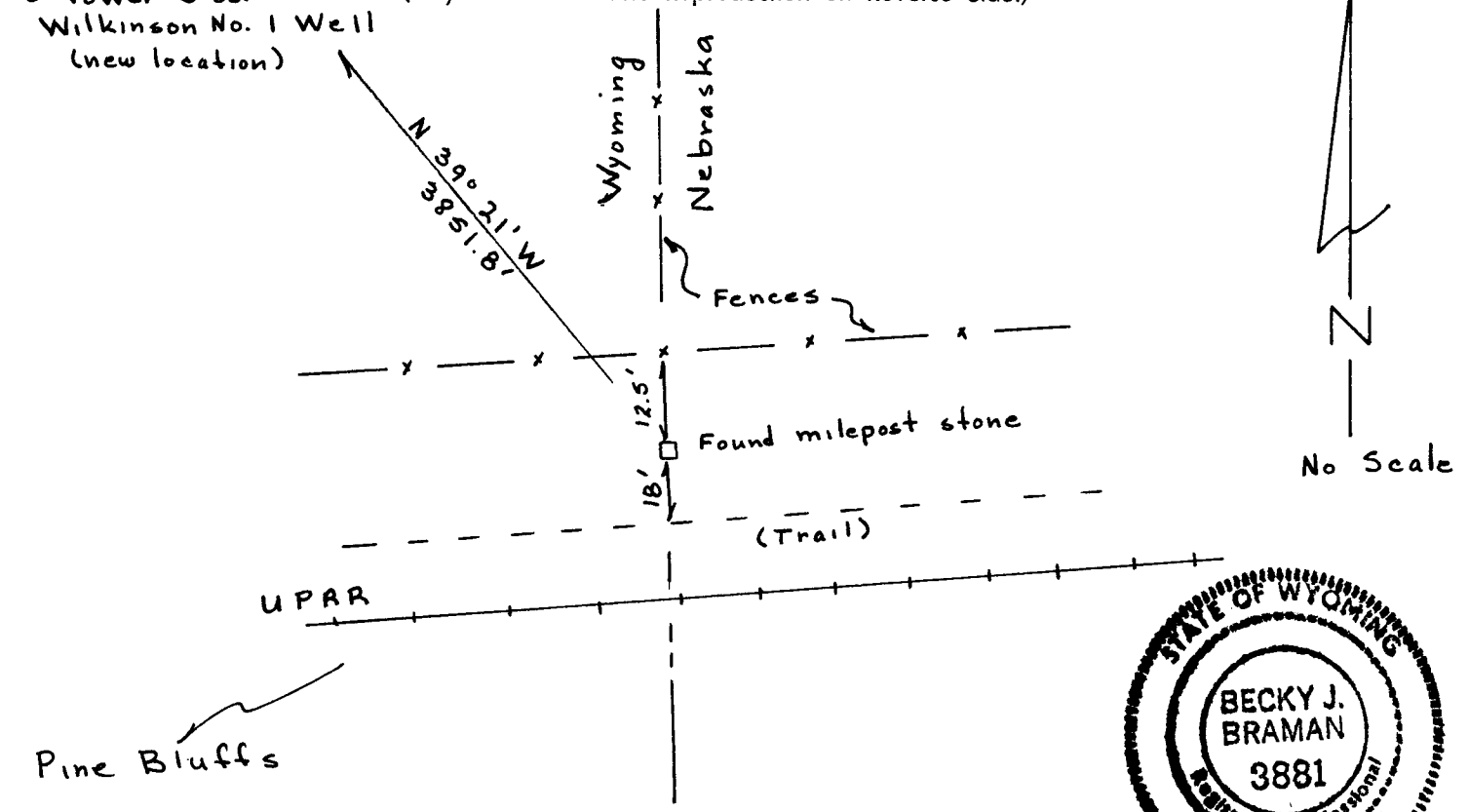
DESCRIPTION OF MONUMENT AND ACCESSORIES ESTABLISHED TO PERPETUATE THE ORIGINAL LOCATION OF THIS CORNER:

None

SKETCH, WITH COURSE AND DISTANCE TO ADJACENT CORNER IF DETERMINED IN THIS SURVEY.

To Vower Bros. -
 Wilkinson No. 1 Well
 (new location)

(May Sketch or Paste Reproduction on Reverse Side.)



I, Becky J. Braman, L.S. #3881 certify that I have carefully performed or supervised the work done on the diagrammed corner as reported on this recordation form and approve the same.

Becky J. Braman L.S. 3881
 Signature of Surveyor Registration No.

STATE OF WYOMING,
 Office of Clerk and Recorder,
 County of Laramie

778068

This "corner record" was filed for record on the FEB 6 1985 day of 1985, 1985, was noted on the cross-index plat and is assigned page No. _____, in book No. _____.

James C. Whitehead
 County Official

Cross Index No. _____	T. _____	R. _____	Mer. _____
_____	T. _____	R. _____	Mer. _____
_____	T. _____	R. _____	Mer. _____
_____	T. _____	R. _____	Mer. _____
_____	T. _____	R. _____	Mer. _____
_____	T. _____	R. _____	Mer. _____
_____	T. _____	R. _____	Mer. _____

T-19 T14 R60